

# LETHBRIDGE PRIMARY SCHOOL

2 Stephenson Street, Lethbridge, Vic. 3332 Phone: 03 5281 7214

Email: lethbridge.ps@education.vic.gov.au

www.lethbridgeps.vic.edu.au

Newsletter No. 5

29 March 2024

## Care Respect Collaboration Resilience

Lethbridge Primary School acknowledge the traditional custodians of our school lands, the Wadawurrung people, and pay our respects to Elder's past, present and future.

April	Monday	15	School returns for Term 2	
	Tuesday	16	District Athletics Day – Selected students	
	Wednesday	17	6pm: LPS 150 <sup>th</sup> birthday – planning meeting	
	Friday	19	3pm: Assembly	Families welcome!
	Thursday	25	ANZAC Day – public holiday NO SCHOOL FOR STUDENTS	
	Friday	26	Curriculum/Student Free Day NO SCHOOL FOR STUDENTS	
	Friday	26	District Cross Country – Selected students	
	Tuesday	30	Tennis Clinic	
May	Friday	3	3pm: Assembly	Families welcome!
	Friday	10	Mother's Day Stall	More information soon.
	Wed-Fri	15-17	Year 3 Camp	
	Saturday	18	Bunnings BBQ fundraiser	

### ASSEMBLY

Our first assembly for Term 2 will be held this Friday. At our assembly, Student Leaders will receive their badges. This will include School Captains, Vice Captains, House Captains, Specialist Captains and our Student Representative Committee. Families are very welcome to attend!

### LEARNING CELEBRATIONS

The smiles were infectious during the final Monday afternoon of Term 1 as we welcomed families into our classrooms for our Learning Celebrations! The sense of pride and chatter amongst students and families was wonderful! I particularly enjoyed reading the citizenship letters written by our Year 5/6 students as part of their Inquiry focus on what it means to be an Australian Citizen. It was wonderful to see their prior knowledge being activated from the exploration they engaged in last year as part of their focus on immigration and building on this knowledge.

Thank you very much, to the families who were able to visit us and share in the delight of each students' pride in their learning! We invite all families to discuss celebrations in learning and wellbeing. This might include acknowledging milestones such as putting shoes on the right feet, remembering a lunch order or simply asking "what went well today?"

### HOT CROSS BUNS

During the final week of term 1, our School Captains and Vice Captains heated, buttered and delivered hot cross buns to our classrooms! This fundraiser was a welcome treat for our students! We are very happy to announce that we raised \$ 223.30. These funds will contribute to our new bike shelter.

### BUNNINGS BBQ!

Our annual Bunnings BBQ fundraiser is back! Saturday May 18 at North Geelong. In preparation for this day, we are asking parents to please advise us of their potential capability to volunteer at the BBQ. Each shift will involve at least four volunteers for approximately 2 hours. The Bunnings BBQ is a great opportunity to get to know other parents from our community and support our school!

<https://forms.gle/ZHSK55ppn6vDVKRZ7>

Please use the link above to indicate your availability or call us on 5281 7214.



### ZOOPER DOOPERS for the GOOD FRIDAY APPEAL

During term 1, our SRC raised money for the Good Friday Appeal. During lunch times each Thursday for three weeks, they have proactively helped students to select their flavour and collected payment. We are aiming to announce the total fundraising effort very soon!

### SCHOOL MAINTENANCE

In recent weeks we have had difficulty finding support for the maintenance of our front garden. If you have some spare time after school or on the weekends, we would love your help with weeding. Any amount of time would be wonderful, and children are welcome to help... or enjoy the playground!

## SCHOOL COUNCIL

Our new School Council met for the first-time towards the end of Term 1. As part of the initial meeting, we aim to develop everyone's knowledge of School Council functions and determine office bearers. Our School Council consists of parent and employee members, where the responsibility is to assist in the efficient governance of the school.

### 2024 School Council - Parent Members

Nicole Dean  
Mandy Humpage - President  
Cassandra Kettle  
Tony Last  
Chloe Pettigrew  
Emily Ptacek – Vice President  
Tsering Sherpa  
Ebony Siemienowicz  
Caitlin Warnock

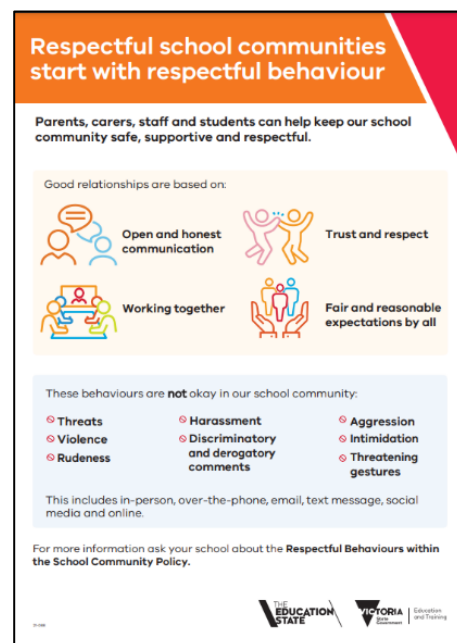
## CONVERSATIONS and MEETINGS

Schools are busy places and at times, there is little opportunity for big conversations. Contact with teachers is available through Sentral, leaving a message with the office or a quick chat at the gate after school. Due to our current timetable, I am also teaching a range of classes this year and so my ability to respond to emails, messages and phone calls may take a longer than we have experienced in the past.

## RESPECTFUL COMMUNITIES START WITH RESPECTFUL BEHAVIOUR

We value the positive partnerships we have with families to support the education and wellbeing of our students. The health and safety of our staff and students is a priority. We are committed to ensuring that everyone is treated with respect, fairness and dignity. We expect all employees, students, parents and visitors in our school to act accordingly. Our School Values underpin our actions, and these are expected to be modelled by all stakeholders within our school community. It is important we approach concerns with a positive and collaborative mindset, focusing on education and community involvement to maintain a safe and respectful environment for everyone. When raising concerns, posing wonderings to gain insight into different perspectives can be helpful in building a strong understanding of a situation, and in turn this can support a resolution.

Take care and stay safe,  
Chelsey



## REPORTS FROM OUR STUDENTS

### P/1 Inquiry

The Prep and Year 1 students have been learning about communities and the people who help. The students have been engaged in visits from special guests, such as nurses, the CFA, SES and local police.

Last Thursday a nurse came in to teach us about hospitals. We learnt that nurses help people when they are feeling sick.

- Charlotte, P/1B

The nurse came in and we got to see and touch some equipment. I also got to try on the stethoscope, the goggles and the mask. Nurses can check people's hearts to make sure they are healthy.

- Aria, P/1B

Today the SES visited Lethbridge Primary School. They help people stuck in the bush.

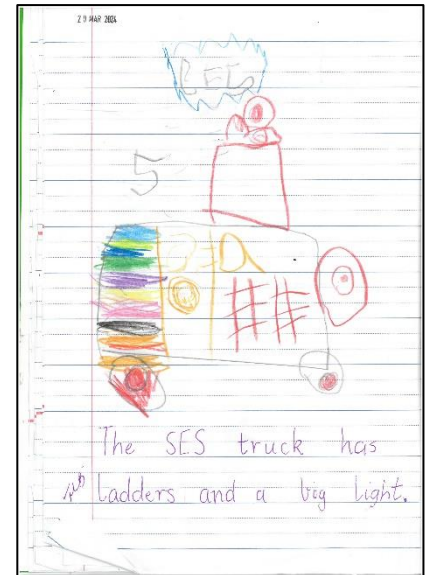
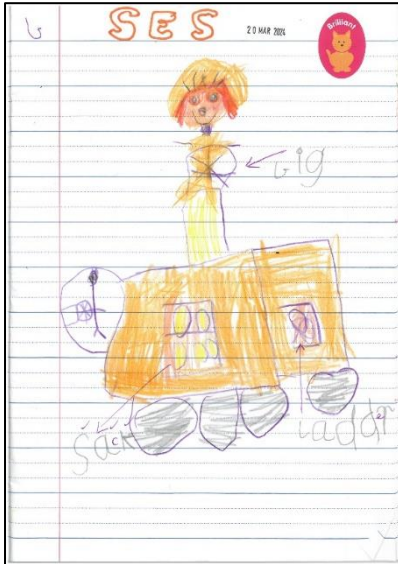
- Maya, P/1B

Today the SES came to school. The SES showed us all of the tools they use like a chainsaw and a hammer. The SES help when there are people stuck in cars.

- Chiara, P/1B

The SES came in the Prep/1 class because we are learning about people that help in the community. The SES has a truck so they can fit all the tools in. My favourite thing is the SES truck. They can fly their truck in a big Army airplane.

- Aria, P/1B



### Cross Country

During the final week of Term 1 we had Cross Country at the Lethbridge Lake. At 9am all classes marked their roll and then we headed to the lake. The Prep and Year 1 students ran their race first, they did a really good job running 800 metres! The Year 2 students also went well with their race. Students were then separated into our age groups; under 10, under 11 and under 12. The students in the under 10 age group ran 2 kilometres, while the students in the under 11 and 12 age group then ran a 3-kilometre course. Well done to everyone for putting 100% effort into their race and supporting their House!

The track was bumpy, and Tom's shoes even fell off which made it much worse and annoying. The track was also bushy.

We had a great time with our friends and would like to thank Mrs Palmer and all the staff for preparing, setting up and supporting Cross Country. We are looking forward to the District competition results next term.

- Tom and Briah, 5/6H

### HEALTH AND HYGIENE

While at school, students are supported with health and hygiene protocols such as using hand sanitiser. Throughout our learning spaces, we also have air purifiers and encourage ventilation through classrooms during the school day.

It is recommended that staff members, students or visitors who have symptoms of cold, influenza or COVID-19 undergo testing for COVID-19. Parents of symptomatic students will be contacted to collect their child from school and keep them home until they are no longer symptomatic.

There is at present an increase in community transmission of COVID-19 in Victoria.

You can help us keep our school as safe as possible by taking 2 important steps:

1. Ensure your COVID-19 vaccinations are up to date. Information on how and where to get vaccinated is available on the Get Vaccinated webpage.
2. If your child shows symptoms of COVID-19, please ensure they stay home and get tested. The easiest way to test is to use a rapid antigen test (RAT). Free RATs are available from your local council where you can collect 2 packs of 5 RATs and an extra 2 packs for each person in your household. People with disability and their carers can get 4 packs of 5 RATs. You are not required to have a Medicare card and you can collect RATs as many times as you need. You can also buy RATs at supermarkets, pharmacies and other retailers.

If your child has symptoms but tests negative, please ensure they stay home until they no longer have symptoms.

If the RAT test result is positive, please ensure they stay home for at least 5 days and until there are no more symptoms.

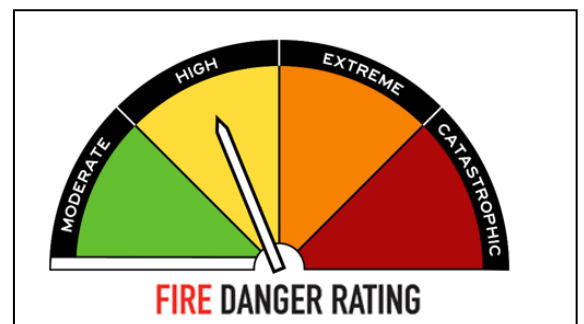
### SCHOOL PREPARATIONS FOR THE BUSHFIRE SEASON

Each year, to prepare for bushfires and grassfires, schools and early childhood services complete a range of activities.

The Department of Education runs an annual fire risk assessment of schools and early childhood services. They are allocated a category of risk (categories 0 to 4) and are published on the Bushfire At-Risk Register (BARR).

All schools and early childhood services listed on the BARR and Category 4 list will also close when a Catastrophic fire danger rating day is forecast in their fire weather district.

When the Bureau of Meteorology provides public fire danger rating forecasts or fire weather warnings, they use fire weather district areas. In Victoria, there are 9 fire weather districts, which are based on Local Government Area boundaries. Our school is in the **Central district**. As part of preparing our school for the fire season, we have updated and completed our Emergency Management Plan, and completed preparation tasks such as clearing the guttering of our buildings.



### What does this mean for our school?

Our school has been identified as being at risk of bushfire or grassfire and is a **Category 4** school.

Our school will **close** on a day forecasted as Catastrophic fire danger rating in the Central fire district.

#### ***What is the department's policy?***

The department's [Bushfire and Grassfire Preparedness Policy](#) requires all schools and early childhood services on the BARR and the Category 4 list to close when a Catastrophic fire danger rating day is forecast in their fire weather district. All school bus routes which travel in or through a district with Catastrophic fire danger must also be cancelled.

#### ***When will our school be closed due to Catastrophic fire danger?***

Our school will **close** on a day forecasted as Catastrophic fire danger rating in the Central fire district.

Closure of the school due to a forecast Catastrophic day will be confirmed on the day prior and we will provide you with advice before the end of the school day. Any information regarding potential or confirmed Catastrophic fire danger days will be communicated to you by via Sentral and Class Dojo.

**Once confirmed, the decision to close will not change, even if the weather forecast changes.** This is to avoid confusion and help your family plan alternative care arrangements for your child. It is also important to be aware that:

- No one will be on site on days where the school is closed due to a forecast Catastrophic day.
- Out-of-school-hours care will also be cancelled on these days.
- All bus routes that travel through the Catastrophic area will be cancelled.
- School camps will be cancelled if a Catastrophic fire danger rating day is forecast for fire weather district in which the camp is located, or if the travel involves passing through areas that have Catastrophic fire danger.

Families are encouraged to action their Bushfire Survival Plan on Catastrophic fire danger rating days. **On such days, children should never be left at home alone or in the care of older children.**

For those of us living in a bushfire prone area, the Country Fire Authority (CFA) advises that when Catastrophic days are forecast, the safest option is to leave the night before or early on the morning of the Catastrophic day.

#### ***What can families and the school community do to help us prepare?***

- Ensure we have your current contact details, including your mobile phone numbers.
- Keep in touch with us by reading our newsletters, and checking notifications regularly on Sentral and Class Dojo.
- Make sure your family's bushfire survival plan is up-to-date and includes alternative care arrangements in the event that our school is **closed** due to elevated fire danger or closed due to a Catastrophic fire danger. Further information can be found on the [CFA's website](#).
- Action your family's bushfire survival plan if your own triggers are met. Our school community may be spread out across many areas and some families may be at higher risk than others. Your family's safety is critical, so please let us know if you are actioning your bushfire survival plan and if your children will be absent on these days.
- If your child is old enough, talk to [them about bushfires](#) and your family's bushfire survival plan.

You can find more information on emergencies, warnings and preparedness actions here:

- VicEmergency app – that can be downloaded on your android and iOS mobile devices
- VicEmergency Hotline (1800 226 226)
- Website <https://emergency.vic.gov.au>
- Facebook (<https://www.facebook.com/vicemergency>)
- Twitter (<https://twitter.com/vicemergency>)
- ABC local radio, Sky News and other emergency broadcasters

## STUDENTS OF THE WEEK

### Term 1, Week 8

<b>P/1 B</b>	<b>Kobe</b> For your increased confidence in reading and writing. I am SUPER IMPRESSED Kobe with your willingness to have a go independently. Keep it up Kobe!
<b>P/1 MC</b>	<b>Milla</b> For consistently showing kindness and care towards your peers, and lighting up the day with your smile. Keep being a superstar Milla!
<b>2/3 B</b>	<b>Lily K-S</b> For showing care and kindness to your peers. You are always willing to share your knowledge and give your time to encourage and support your fellow classmates. Thanks for being such a thoughtful member of our class Lily!
<b>3/4 M</b>	<b>Gemma</b> For her resilience when writing narratives. Congratulations Gemma on some fantastic narratives!
<b>5/6 H</b>	<b>Tomas</b> For displaying respect in the classroom. I am super impressed with the choices you are making, especially to ensure you're listening and staying on task! You should feel proud of your efforts! Well done, Tomas!
<b>5/6 O</b>	<b>James</b> For showing resilience and demonstrating a growth mindset with your reading. You have improved your effort in many areas of your learning. Keep up the good work, James!
<b>Art Award</b>	<b>Aria K</b> For challenging herself to drawing the lines for a weaving artwork piece.
<b>STEM Award</b>	<b>Grace and Jenna</b> For your initiative, courage and communication skills when speaking at assembly about composting. Keep up the great work!
<b>P.E. Award</b>	<b>Eli</b> For stepping out of his comfort zone and giving netball a go. You made me so proud Eli!
<b>Principal's Award</b>	<b>Kassidy</b> For your unwavering support of others and commitment to learning. You are a wonderful role model Kassidy!

### Term 1, Week 9

<b>P/1 B</b>	<b>Evie</b> For her increased confidence when reading. Well done Evie!
<b>P/1 MC</b>	<b>Piper</b> For being helpful whenever you can. Your kindness is appreciated by those around you. Keep it up Piper!
<b>2/3 B</b>	<b>Kate</b> For all the hard work you put into publishing your story about The Great Escape, especially the amazing artwork you added to bring your story to life. Well done, Kate!
<b>3/4 M</b>	<b>Meadow</b> For her persistence with the area of length in mathematics. Congratulations Meadow!
<b>5/6 H</b>	<b>Emily</b> For displaying kindness and respect towards others. Your ability to make others feel included is truly amazing. I love how caring you are and the friendships you continue to make is fantastic. Keep up the awesome work!
<b>5/6 O</b>	<b>Lottie</b> For your impressive Inquiry project display. I loved your thoughtful, creative and helpful welcome gift and letter. Excellent effort, Lottie!
<b>Art Award</b>	<b>Bodhi</b> For his excellent focus in Art creating a weaving artwork piece.
<b>Italian Award</b>	<b>Lily K</b> For always trying to pronounce learnt and new Italian vocabulary. Keep up the amazing work Lily!
<b>STEM Award</b>	<b>Chiara</b> For her 'turtle friendly' lunch box and ideas for being environmentally friendly. The world thanks you Chiara!
<b>P.E. Award</b>	<b>Ryder M</b> For his enthusiasm when playing netball. Fantastic effort Ryder and keep up the great work!
<b>Principal's Award</b>	<b>Levi J</b> For showing a keen readiness for learning and asking questions to support your understanding. Well done, Levi!



## AT-SCHOOL MUSIC

Learn at school, during school & without leaving school

Pat Wheeler is at Lethbridge Primary School on Fridays to conduct instrumental music sessions with individual students.

### Key information

Piano, drums and beginner guitar are available.

### To register and make a booking:

Bookings and payments are managed directly by At School Music.

Go to [atschoolmusic.au](https://atschoolmusic.au) and complete the enquiry form at the bottom of the page.

Staff at At-School Music will contact families directly using information provided by parents in the website enquiry submitted.

## CAMPS, SPORTS AND EXCURSIONS FUND (CSEF)

School camps provide children with inspiring experiences in the great outdoors. Excursions encourage a deeper understanding of how the world works while sports teach teamwork, discipline and leadership. All are a part of a healthy curriculum.

CSEF is provided by the Victorian Government to assist eligible families to cover the costs of school trips, camps and sporting activities. If you hold a valid means-tested concession card or are a temporary foster parent, you may be eligible for CSEF. The allowance (\$150 for Primary school students) is paid to the school to use towards expenses relating to camps, excursions or sporting activities for the benefit of your child.

To be eligible for the fund you must:

• on the first day of Term one, or;

• on the first day of Term two;

• a) Hold a Veterans Affairs Gold Card, Centrelink Health Care Card (HCC), Pensioner Concession Card (PCC), OR

• b) Be a temporary foster parent, and

• c) Submit an application to the school by the due date.

Parents who receive a Carer Allowance on behalf of a child, or any other benefit or allowance not income tested by Centrelink, are not eligible for the CSEF unless they also comply with one of (a) or (b) above. If you applied for CSEF at Lethbridge Primary School last year, you do not need to complete an application for this year, unless there has been a change of family circumstances. You only need to complete an application form if any of the following has occurred:

• new student enrolments; your child has started at Lethbridge Primary School in 2023.

• changed family circumstances; such as a change of custody, change of name, concession card number, or new siblings commencing this year (e.g. prep students)

Please contact the office to obtain a CSEF application form or download from [www.education.vic.gov.au/csef](https://www.education.vic.gov.au/csef)

## CONVEYANCE ALLOWANCE

The conveyance allowance is a contribution towards transport costs and is not intended to cover the full cost of transporting children to and from school. Eligibility:

An application on behalf of a student may be submitted if the student is:

• a Victorian resident;

• school aged and enrolled (3) three or more days per week at a school; and

• attending a school/campus located outside the Melbourne metropolitan conveyance boundary

• A student who meets the above requirements may be eligible if they:

• attend their nearest or designated neighbourhood government school/campus appropriate to their year level, at which admission is permissible, and

• reside 4.8km or more by the shortest practicable route from the campus attended

For further information regarding the Conveyance Allowance Program see: <https://www2.education.vic.gov.au/pal/conveyance-allowance/policy?Redirect=1>. If you think you may be eligible for Conveyance Allowance, please see Meagan in the office.



FINANCIAL ASSISTANCE  
INFORMATON FOR PARENTS

## DEVICES AND BEING SAFE ONLINE

the *Carly Ryan* foundation. APP FACTS

# TIK TOK

(Including Musical.ly)



Age Rating in the App Store: **12+**

Age rating according to app provider.

Tik Tok is a social media platform for creating, sharing and discovering short music videos. Every day, millions of people use Tik Tok as an outlet to express themselves through singing, dancing, comedy, and lip-syncing. The app celebrates creativity with videos recorded in 15 seconds or less and shared across the Tik Tok community.

You have the ability to make cool, short videos—songs or short dialogues – that you can share with the world, and people can see them. Think MTV meets SNL meets karaoke meets Dubsmash meets American Idol meets Instagram.

### Challenges

- 12+ content in the songs lyrics. Swearing and adult concepts in the provided music.
- Pornography, graphic content, suicide notes.
- Tik Tok users can search for other users to view or follow near their own location/city.
- User generated videos can be viewed and shared onto other social media and messaging apps increasing exposure.
- Bullying in comments.
- Users can publicise their messenger usernames or social media profiles on their Tik Tok profile.
- Many underage accounts with large amounts of followers.
- Easy for users to create multiple accounts and hide them from their parents.
- Fake Tik Tok apps on the app store that charge for download or offer followers.

**NOTE:** TikTok offers a live feature for users with 1000+ followers on their profile. This service is intended for ages 16+

### How Do I Delete My Tik Tok Account?

- Open the Tik Tok app and login.
- Tap on the person icon at the lower right of your screen to open your profile.
- Click on the three dots located in the upper right corner.
- Click on "Privacy and Settings".
- Click on "Manage my Account".
- Add a phone number if you haven't already.

- A verified phone number is a requirement for removing your Tik Tok account.
- Scroll to the bottom of the page where it says "Thinking about removing your account?" Tap it.
- Tap "Send Code".
- Wait for the code to be sent.
- Enter the 4-digit code within 60 seconds of it being sent to you. Then hit continue.
- Read over the implications of removing your account. Hit continue if you agree with the terms.
- Hit "Delete Account". You'll be logged out and your account will be deleted.

### How Do I Block a Tik Tok Account?

- Open the Tik Tok app and login.
- Tap on the magnifying glass.
- Search for the user you want to block.
- Tap their name or photo.
- Tap on the --- icon.
- Tap "Block".

### How Do I Report a Tik Tok Account?

- Open the Tik Tok app and login.
- Tap on the magnifying glass.
- Search for the user you want to block.
- Tap their name or photo.
- Tap on the --- icon.
- Tap "Report" and fill out the user report.

App Fact Sheets available from the Carly Ryan Foundation. Please email: [info@carlyryanfoundation.com](mailto:info@carlyryanfoundation.com)

[carlyryanfoundation.com](http://carlyryanfoundation.com)

 TheCarlyRyanFoundation  @thecarlyryanfoundation  @TeamCarlyCRF

 Carly Ryan Foundation Inc. 2020

## SECONDARY SCHOOL TOURS

### College Tours



**Remaining Dates:**  
Wednesday 17 April  
Friday 19 April - **Booked out**  
Tuesday 23 April - **Additional tour date**

**Book Now** [sjc.vic.edu.au](http://sjc.vic.edu.au)  
We welcome all Year 7 2025 families to join us



# COMMUNITY NOTICES

## PARENT EDUCATION EVENTS

GEELONG and BARWON  
SOUTHWEST REGION



### 1 TERM 2, 2024

All Regional Parenting Service programs along with MELI (formerly Barwon Child Youth & Family (BCYF) and Bethany), Family Relationship Centre, Drummond St Services and Barwon Southwest Region programs will be offered face to face or online. Bookings are essential. For details of dates, times and venues please see below.

#### BRINGING UP GREAT KIDS

##### The First 1000 Days

The first 1,000 days of life is a program for parents with children aged under 2 years and designed to nurture parents as they embark on their journey. It provides parents with knowledge about brain development and an understanding of how children grow and what they need. The centrality of family relationships and opportunities for parents to reflect on their own childhood and how to connect with their children are all explored.

#### BRINGING UP GREAT KIDS

Bringing up Great Kids is a 6-week supportive program for parents of children aged 12 months to 9 years.

The program aims to:

- develop parents' skills to enhance communication with their children;
- promote positive interactions between parents and their child/ren;
- encourage the development of a child's positive self-identity.

#### CIRCLE OF SECURITY

Circle of Security is an 8-week supportive program for parents of children aged birth to 5 years.

The program aims to:

- help parents understand how to build feelings of security for children in their early years;
- assist parents with skills to build on the positive relationship with their child;
- develop confidence in parents to respond to their child in a way which builds a secure foundation for children.

#### TUNING IN TO KIDS

Tuning in to kids is a 6-week supportive program for parents of children aged 4 to 10 years.

The program aims to:

- help parents teach and support their child/ren to understand and manage their emotions;
- support parents in encouraging children to express emotions appropriately;
- maximise children's social, behavioural and learning outcomes.

#### BRINGING UP GREAT KIDS

##### Parenting Adolescents

The program builds on maintaining positive relationships and interactions between parents and adolescents during the ages of 10 to 17 years. This 6-week program will look at having a better understanding and being able to support your adolescent.

- Finding meaningful ways to stay connected with you adolescent;
- Understand that all behaviour and interaction have a meaning attached to it;
- Develop an increased understanding about the messages that they communicate to their adolescent through their behaviour, actions and attitudes;
- Develop skills to identify and manage their stress associated with parenting.



Parent Education Events

Term 2, 2024

Program	Location / Venue	Days / Dates	Time	Bookings
Dad's Tuning in to Kids	Norlane Child & Family Centre, 52-56 Gerbera Ave, Norlane	Thursdays 2 May – 6 June	9.30am – 11.30am	 <p>Meli, the new name for BCYF and Bethany</p> <p><a href="http://www.meli.org.au">www.meli.org.au</a></p> <p>Ph: 5226 8900</p> 
Bringing Up Great Kids - First 1000 Days	Meli 16 Ballarat Road, Hamlyn Heights	Tuesdays 30 Apr – 4 June	9.30am - 11.30am	
Strengthening Family Connections	Lethbridge Primary School 2 Stephenson St, Lethbridge	Wednesdays 24 Apr – 12 June	4.00pm – 7.00pm	
Bringing Up Great Kids	Armstrong Creek East Community Hub 46-70 Central Blvd, Armstrong Creek	Tuesdays 30 Apr – 4 June	12.30pm – 2.30pm	
Tuning in to Teens	Meli 16 Ballarat Road, Hamlyn Heights	Thursdays 2 May – 6 June	9.30am – 11.30am	
<b>To express your interest for the following programs please contact MELI</b>				
<b>Baby College</b>		<b>Bumps to Bubs</b>		<b>Bubs to Tots</b>
Circle of Security (Abbreviated version)	Childrens Services Building	Wednesdays 24 Apr – 29 May	6.30pm – 8.30pm	 <p>CatholicCare Victoria – Warrnambool</p> <p><a href="http://www.catholiccarevic.org.au">www.catholiccarevic.org.au</a></p> <p>Ph: 4344 4588</p> <p>E: <a href="mailto:helen.diamond@catholiccarevic.org.au">helen.diamond@catholiccarevic.org.au</a></p>
Circle of Security (Abbreviated version)	Moyne Shire	Tuesdays 30 Apr – 4 June	5.30pm – 7.00pm	
Tuning in to Teens	Headspace Warrnambool	Fridays 19 Apr – 24 May	1.00pm – 3.00pm	



Parent Education Events

Term 2, 2024

Program	Location / Venue	Days / Dates	Time	Bookings
Tuning in to Teens	Online via Zoom	Wednesdays 10 May – 14 June	7.00pm - 9.00pm	 <p>Regional Parenting Service</p> <p><a href="http://www.geelongaustralia.com.au/parenting">www.geelongaustralia.com.au/parenting</a></p> <p>Ph: 5272 4741</p> 
Tuning in to Kids	Online via Zoom	Thursdays 4 May – 8 June	7.00pm - 9.00pm	
Circle of Security	Virginia Todd Community Centre 9-15 Clarence St, Geelong West	Wednesdays 3 May – 21 June	7.00pm - 9.00pm	
Bringing Up Great Kids	Online via Zoom	Tuesdays 30 Apr – 4 June	7.00pm - 9.00pm	
No More Scaredy Cats	Online via Zoom	Thursdays 2 May – 31 May	7.00pm – 9.00pm	
<b>To express your interest for the following programs please scan the QR code</b>				
<b>Bringing Up Great Kids - First 1000 Days</b>		<b>Stepping Stones</b>		
<b>Flourishing Families</b>		<b>The Dad Workshop</b>		
Our Kids – Parenting after Separation	Online via Zoom Family Relationship Centre 7 Ryan Place, Geelong	Tuesdays 30 Apr – 4 June Thursdays 2 May – 6 June	Contact the Family Relationship Centre for times	 <p>Family Relationship Centre</p> <p><a href="http://www.catholiccarevic.org.au">www.catholiccarevic.org.au</a></p> <p>Ph: 5246 5600</p>
Online parenting programs	Drummond St Services offer a range of online programs, please see their website for further details.	Various dates and times		

