

ALL-STAR KIDS

LETHBRIDGE PRIMARY SCHOOL

Before & After School Care



We're thrilled to be partnering with Lethbridge Primary School to deliver your Outside School Hours Care program.

All-Star Kids is a locally owned and operated provider—born and based in Geelong—with a strong focus on community, child safety, and creating exceptional experiences for children.

Our programs are designed to support children's growth and development, helping them build the skills they need for success and resilience in school and in life.

We're excited to bring our passion, care, and local expertise to the Lethbridge community!

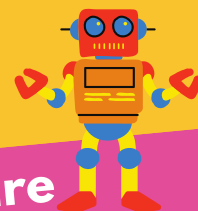


To Enrol:

www.allstarkids.com.au

(03) 5280 8020

lethbridge@allstarkids.com.au



*** Before School Care
6:30am - 9:00am**

*** After School Care
3:20pm - 6:20pm**

*** Childcare Subsidy
Approved**



SESSION FEES

Before School Care
6:30am - 9:00am

\$28.50

After School Care
3:20pm - 6:20pm

\$32.50

Pupil Free Day
8:00am - 5:30pm

\$85.00

CHILD CARE SUBSIDY

All-Star Kids is a Child Care Subsidy (CCS) Approved Provider. The level of subsidy you receive depends on your family's annual adjusted taxable income and your work/study hours.

Family Income	Subsidy Rate
\$85,279	90%
\$85,279 - \$535,279	Decreasing from 90% (Decreases 1% for every \$5,000 income a family earns)
\$535,279 or more	0%

Out-of-pocket costs as low as:

Before School Care
\$2.85 per day

After School Care
\$3.25 per day

Pupil Free Day
\$8.50 per day

FOOD WE PROVIDE

A healthy selection of breakfast options are available until 8:30am each day. A nutritionally balanced afternoon snack and fruit is also provided each day.

HOW TO ENROL

Visit our website to enrol: www.allstarkids.com.au
Please remember, we can only welcome children who are fully enrolled with All-Star Kids and have provided any essential documents.

It's FREE to enrol and it means your account will be available to use if you ever need it.

CCS & STATEMENTS

CCS claims are submitted at the end of each week. CCS payments are received and then a statement will be issued to you. Statements are issued at least 2 days prior to any payments being debited.

PAYMENTS

Payments are made in arrears weekly via direct debit from your bank account or credit card
(A small fee applies for credit card transactions).

WHAT TO BRING

A hat will be required (Term 1 and 4), and we recommend a drink bottle each day. Personal devices will need to stay in children's bags.

MAKE A BOOKING

Once enrolled, you'll gain access to our easy-to-use parent app (OWNA). You can make and edit bookings, update your family and payment details, view statements, make payments, and see what your child has been up to each day in our daily communications.

CANCELLATION FEES

There is no cost to cancel bookings more than 24 hours in advance. Cancellations within 24 hours or no-shows are charged at the full fee. Your child will be marked as 'absent' so CCS can still be claimed.

LATE FEES*

Bookings made with 24 hours will incur a late booking fee of \$1.50 for BSC and \$2 for ASC. A \$5 fee will apply for PFD within 72 hours. Late pickup fees are charged at \$10 per 15 minutes.

***No late booking fees will be charged for the remainder of 2025**