

LETHBRIDGE PRIMARY SCHOOL

2 Stephenson Street, Lethbridge, Vic. 3332 Phone: 03 5281 7214
Email: lethbridge.ps@edumail.vic.gov.au
www.lethbridgeps.vic.edu.au

Newsletter No. 2

8th February 2019

CALENDAR:

FEBRUARY	WEDNESDAY	13	FAMILY CONVERSATIONS – 2PM – 6:00PM BOOK CLUB ORDERS DUE BACK TO THE OFFICE OR VIA LOOP
	TUESDAY	19	COMMUNITY PICNIC AT 5:30PM SCHOOL COUNCIL – 7:00PM
	WEDNESDAY	20	PARENT / CARER HELPER PROGRAM 9:15 – 10:00AM
	THURSDAY	28	PARENT / CARER HELPER PROGRAM 2:30 – 3:15PM
MARCH	FRIDAY	01	COMMUNITY BREAKFAST – 8:15AM
	MONDAY	11	LABOUR DAY HOLIDAY
	TUESDAY	19	SCHOOL COUNCIL – 7:00PM
APRIL	TUESDAY	02	MVA ATHLETICS AT GOLDSWORTHY ROAD – YEARS 3 – 6
	FRIDAY	05	WHOLE SCHOOL CROSS COUNTRY END OF TERM – 2:30 DISMISSAL

REMINDERS:

*Family/Teacher Conversations for Year's 1-6 will occur on Wednesday 13th February, in classrooms. Please check your allocated time, which went home today with the eldest in the family.

SCHOOL TIMETABLE

Please familiarise yourself with our learning blocks, especially noting we have two brain breaks during the day and each student will need to have two lots of healthy vegies or fruit to snack on.

9:00	First bell rings to commence the day
9:00 – 10:00	Learning Block
10:00	First brain break
10:00 – 11:00	Learning Block
10:50/55 – 11:00	Students eat recess snack inside
11:00 – 11:30	Recess <i>The whole school participates in Fitness on Tuesday's, Wednesday's and Thursday's 11:25 – 11:35am</i>
11:30 – 12:30	Learning Block
12:30	Second brain break
12:30 – 1:30	Learning Block
1:30 – 1:40	Students eat lunch inside
1:40 – 2:20	Lunch play
2:20 – 3:20	Learning Block
3:20	Dismissal

Please try to limit packaging sent to school. We do aim to be a 'nude food school' to minimise our rubbish.

Whilst we are not a 'Nut Free School', please be mindful of sending products containing nuts as we have an anaphylactic student at school.

FAMILY CONVERSATIONS

Next Wednesday 13th February we will be holding our Year 1-6 conversations with parents/carers. These are focused on getting to know the learner and addressing any queries or concerns you may have with the classroom teacher. The conversations are very short and sharp, plus are reliant on punctuality! Please ensure you arrive on time to your allocated time. The conversations will be held in the student's classrooms. Students will be busy outside engaging in a whole school activity.

SCHOOL COUNCIL

Our first School Council meeting for 2019 is on **Tuesday 19th February at 7pm** in the Learning Street. We would appreciate all current members attending.

We currently have 4 vacancies for parent members to commence two year terms. We also have one vacancy for a one year term.

School Councils play a key role in Victorian Government schools. Participating as a School Council member is a rewarding and challenging experience. The School Council supports the Principal to provide the best possible

educational outcomes for students. The School Council has particular functions in setting and monitoring the school's direction. School Councils have three main responsibilities:

- finance: overseeing the development of the school's annual budget and ensuring proper records are kept of the school's financial operation
- strategic planning: participating in the development and monitoring of the school strategic plan
- policy development and review: developing, reviewing and updating policies that reflect a school's values and support the school's broad direction outlined in its strategic plan.

If you would like to nominate yourself or another parent/guardian please see Julie or myself for a nomination form. Please also see me or visit the Department of Education website if you require any further information about becoming a School Council member for our school community.

Thank you very much to our outgoing School Council members; Sharlene Jury, Andrew Fielden, Andrew Grigsby and Danielle Barber for their commitment to the improvement of our school.

Thank you also to the following members who have finished their two year terms, but are eligible to re-nominate themselves for another two year term; Tracey Field, Teha Campbell and Katie Hines.

STUDENT ABSENCES

It is Department of Education policy for families to notify the school prior to students being absent from school for any reason. If we do not receive communication, then we need to make contact home. You can advise us of absences in a number of ways; directly to the classroom teacher or office, via telephone or email, as well as on Flexibuzz through the Absence Form submission tab.

We thank you for your assistance with this.

FLEXIBUZZ

An important aspect of our communication with home is the use of Flexibuzz. This is an App that is downloaded onto your phone and notices are put through via its platform. You will need to sign up to your child's classroom, to receive the relevant information. We also aim to maintain the Calendar on it as well.

Flexibuzz can also be accessed on a computer, through its webpage. <https://web.flexibuzz.com/> Please let us know if you require any assistance with using Flexibuzz.

CONVEYANCE ALLOWANCE

Forms for families living outside of Lethbridge to receive the Conveyance Allowance have been sent home. Anyone living 4.8km away from the

school are eligible to receive the allowance, if this is your closest school. Please see Mrs Rieck if you would like a form or for further information.

CAMPS, SPORTS AND EXCURSIONS FUND (CSEF)

School camps provide children with inspiring experiences in the great outdoors, excursions encourage a deeper understanding of how the world works and sports teach teamwork, discipline and leadership. All are part of a healthy curriculum. CSEF will be provided by the Victorian Government to assist eligible families to cover the costs of school trips, camps and sporting activities. Families holding a valid means-tested concession card or temporary foster parents are eligible to apply. \$125 per year is paid for eligible primary school students, with \$225 per year paid for eligible secondary school students. A special consideration eligibility category also exists. Payments are made directly to the school and are tied to the student.

To be eligible for the fund you must:

- on the first day of Term one, or;
- on the first day of Term two;
- a) Hold a Veterans Affairs Gold Card, Centrelink Health Care Card (HCC), Pensioner Concession Card (PCC), OR
- b) Be a temporary foster parent, and
- c) Submit an application to the school by the due date.

Parents who receive a Carer Allowance on behalf of a child, or any other benefit or allowance not income tested by Centrelink, are not eligible for the CSEF unless they also comply with one of (a) or (b) above.

HOW TO APPLY Contact the school office to obtain a CSEF application form or download from www.education.vic.gov.au/csef

FOOTY CLINIC



The Lethbridge PS Community would like to thank the Geelong Cats and Lethbridge Rosella's Football Club's for the sensational clinic we participated in on Monday 4th February. All students were engaged, practising their skills and most importantly – having fun! They were in awe of the footy players!

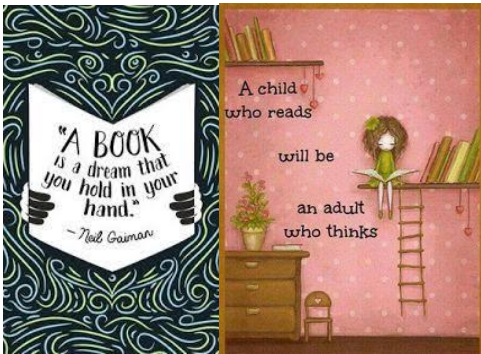
We look forward to continuing this important partnership.

COMMUNITY PICNIC

We apologise for the last minute cancellation of our Community Picnic, but safety of everyone is paramount. We have re-scheduled this to occur on **Tuesday 19th February at 5:30pm**, which is before our first school council meeting of the year. We look forward to seeing you then to enjoy a picnic and outdoor games, with beautiful clear weather!

**We hope you have a wonderful weekend,
Emma Remilton and staff of Lethbridge PS**

THE GEELONG M.A.R.C VAN LITERACY & LIBRARY PROGRAM M.A.R.C TEACHER: MRS. SHERIDAN LANG



Welcome to your M.A.R.C Van library and literacy learning class for 2019!

This term in our M.A.R.C Van classes we will:

- Get to know more about ourselves and each other as readers; explore our own and other's reading interests; learn specific strategies to select 'good fit' books;
- Explore fiction, non-fiction and picture story books to catalyse children's own/collaborative authorship through engagement in imaginative, informative, persuasive and performative texts;
- Expand our vocabulary and understanding of literal/inferential meaning to deepen our understanding of comprehension;
- discuss literary experiences with others; retell and perform known stories;
- create multi-modal literary texts based on children's own experiences and imaginings;
- develop storylines, role/characters, settings, explored from different viewpoints and for different purposes;
- Learn to connect to our humanity through the stories we read, interpret, express, hear, perform and experience every day through multi-literacy experiences;

- Explore literacy learning through drama, dance, physical activity, visual art, digital and narrative texts to explore multiple perspectives, real world issues, individual and communal meaning, foster creativity & Imagination and shared experiences.

The Geelong M.A.R.C Van Program Aims to:

- To increase and support engagement in reading, writing, speaking, listening & viewing;
- Improve literacy outcomes for all students;
- Provide access to a wide range of literature;
- Create literacy learning opportunities to extend student outcomes.

STUDENTS OF THE WEEK

Prep / 1M	HEATH For displaying excellent resilience and settling into 2019 really well. Great job Heath!
Prep / 1S	MILLY For coming in each day with a smile and showing resilience when things don't go to plan. Well done Milly!
Grade 2 / 3H	POPPIE & ANNABEL For showing persistence when solving number problems and challenging themselves!
Grade 2 / 3W	ALEXANDER For having a positive mindset and making an enthusiastic start to the new school year.
Grade 4 / 5C	ASHLEY For her great start to the year and showing persistence when doing her testing.
Grade 4 / 5M	CHELSEA L For a great start to the year demonstrating all of our school values. Keep it up!
Grade 6M	CHELSEA C For her resilience in continuing to try her hardest to solve difficult maths problems.

Italian	CONGRATULAZIONI CATHERINE D (P/1M) & BAILEY S (4/5C) On their amazing Italian this week.
STEM	LANI B (4/5M) For her brilliant wondering of "I wonder why cats hiss at each other?"
Principal's Award	HARRY For amazing us all with his impressive display of resilience by making a positive start to being a Year 6 Leader. Congratulations Harry!

Netball for 2019 – Season 1 (February-June)
Please see Mrs Rieck if you are interested in playing Netball on Monday, after school competition, at the Bannockburn YMCA.

BOOK CLUB ORDERS ARE DUE BACK TO SCHOOL OR VIA PARENT LOOP ORDERS ON THE SCHOLASTIC BOOK CLUB WEB SITE BY WEDNESDAY 13TH FEBRUARY

STUDENT BANKING DAY - TUESDAY

2019 Polar Savers Rewards

We're excited to announce the new Polar Savers reward items for 2019:



Term 1: Scented Stackable Highlighter, Snowy Origami Set

Term 2: Yeti Fluffy Notebook, Icicle Slapband Ruler

Term 3: Arctic Owl Fluffy Keyring, Scratch Art Cards

Term 4: Water Skimming Bounce Ball, Polar Pencils & Pencil Toppers

Students can redeem 10 silver Dollarmites tokens for a Polar Savers reward by completing a redemption slip and returning the whole slip with the students name and banker ID on their School Banking day.



ALL ABOUT KIDS!

**ARE YOU INTERESTED IN LET'S GO LEGO CLUB?
PLEASE REGISTER WITH THE BANNOCKBURN LIBRARY.**

Make new friends and explore your creativity with LEGO. This program aims to meet the diverse needs of children and can be an effective way to engage children with autism. Parents and carers are required for supervision and assistance. Ages 5 - 11. Register your interest by phoning Bannockburn Library on 5281 2367. In partnership with Golden Plains Shire.

The program will commence once there is a minimum of 6 participants. It is planned for the program to run on either Wednesdays 4.00-5.00pm or Thursdays 3.45-4.45pm during school term.

REGISTER NOW!

www.grlc.vic.gov.au/events



KIDS HUDDLE

The Geelong Cats might be our city's #1 team but at GMHBA Stadium we welcome ALL teams from ALL sports!

It's an even busier calendar of major events at the stadium in 2019 and we want your school to be a part of it. Imagine a wall full of your students' colourful messages and pictures - and it's the first thing visiting players and coaches see when they arrive at the stadium.

1. ONE lucky local Primary School will be allocated to each visiting team for each major event.
2. Students CREATE well wishes, pictures and notes welcoming visiting teams to our stadium and our town.
3. We provide enough paper to fill the special space. The rest is up to you and your students' IMAGINATION.

We can't wait to see what our local kids can produce to celebrate our community spirit - friendly, encouraging and warm.

Please see below the KIDS HUDDLE first term event dates.

3/1/19 BBL - Renegades vs Strikers	3/1/19 WBBL - Renegades vs Hurricanes
13/1/19 BBL - Renegades vs Heat	13/1/19 WBBL - Renegades vs Sixes
2/2/19 AFLW - Cats vs Magpies	22/2/19 NRL - Storm vs Warriors
23/3/19 AFLW - Cats vs Blues	2/3/19 A-League - Victory vs Jets
7/3/19 AFL - Cats vs Bombers	23/3/19 AFLW - Cats vs Dockers

Contact us today to be allocated an event and get started on your creations. Allocations will be made on a first in basis, however Term 2 and Term 3 we will be seeking further participation for the 2019 AFL season, so if you miss out during Term 1, stay tuned!

Kirsten Blake
Community Engagement Coordinator
Kardinia Park Stadium Trust
PH: 5224 9104
kirsten.blake@kardiniapark.vic.gov.au

WELCOME TO LETHBRIDGE PS

After The Bell OSHC PROGRAM


Star Quality OSHC

After The Bell Aus provides a high quality care service for families that utilise our Outside School Hours Care (OSHC) and Early Years services.

After The Bell Aus do not require external independent assessment to attest to our **Star Quality Services**.

Our acclaimed assessment and ratings with the Regulatory Authority confirm our high-quality service delivery.

After The Bell Aus has strong collaborative ties with our partner schools, and we deliver a service to meet the specific needs of your school community.



Providing quality care and education to the community

★ WHAT HAPPENS AT OSHC

We value growth, development of a child and provide a program that challenges children to be curious about what interests them, while developing self-identity and social competence. We provide the opportunity for children to further explore and develop life skills where children can reach their own individual potential. All while having fun, children will form friendships that will last a life time.

We support the growth and development through early and middle childhood by creating a care environment where children are respected, feel safe, secure, providing a rewarding and engaging program.

Nurturing A World Full of Fun and Creativity

★ FOOD FOR THOUGHT

We value the importance of children's healthy eating choices.

Children are provided with a healthy nutritional breakfast and afternoon snack each session day.

Our menus where possible cater for any special dietary requirements, including children with allergies or cultural needs. The menu changes each week and is displayed at the program.



Children have input into the program menu, whilst learning the value of good healthy choices.

★ OUR EDUCATORS

Each day is an adventure and creating new memories.

This is led by our dedicated, trained Educators that have the skills and abilities to ensure your child's time at the program is rewarding as well as memorable. Foremost making sure your child is always having a fun time in a safe and engaging care environment.

All our friendly Educators hold or are training in the field of Education and are trained in First Aid, CPR, Asthma, Anaphylaxis and hold a Working With Children's Check.

★ PREP AND TRANSITION

At After The Bell Aus we dedicate our time to assist in a smooth transition for all prep children and new children attending the school. This is achieved by an OSHC Educator escorting your child from the OSHC room to their classroom in Before School Care and your children walking over to the OSHC room when attending After School Care.

This procedure is in place for the duration of the year.

Parents and children are encouraged to visit the program and meet the Educators prior to their child's first day of attendance.

Join the fun!

- ★ SCIENCE
- ★ JUNIOR LEADER
- ★ ART AND CRAFT
- ★ SPORTS AND OUTDOOR PLAY
- ★ IMAGINARY PLAY
- ★ CONSTRUCTION
- ★ COOKING CLUB
- ★ LIFE SKILLS
- AND SO MUCH MORE...

BEFORE SCHOOL CARE
6.50am till 8.45am
Session Fee - \$25.00
(can pay as little as \$4.00 with CCP)

AFTER SCHOOL CARE
3.20pm till 6.00pm
Session Fee - \$30.00
(can pay as little as \$5.00 with CCP)

STUDENT FREE DAYS
7.00am till 6.00pm
Normal - \$55.00
(can pay as little as \$9.50 with CCP)

(All above fees are subject to applicable Government Child Care Subsidy (CCS) and are based on per assessment and including the additional \$4.00 casual fee charge)

ENROLMENT & BOOKING

If you wish to use our services, you must enrol your child first. As care cannot commence without a confirmation of enrolment.

Enrol your child through our secure online website enrolment system. Bookings can also be made through our website or by emailing our friendly Head Office Team.

Enrolment is FREE and provides peace of mind, knowing care is available when you need it.

CONTACT US
P-(03) 9758-6744
E-admin@afterthebell.com.au
www.afterthebell.com.au

The New Child Care Package

HOPE SUPPORT FOR MARCH 2015

What's changing?

The new Child Care Package will be implemented from 1st March 2015. This package will provide a range of new services and support for children and their families. The package includes:

- **Child Care Subsidy (CCS)** - A new system of subsidising child care costs for eligible families.
- **Annual Subsidy Cap** - A limit on the amount of CCS a family can receive each year.
- **Additional Child Care Subsidy** - Extra support for eligible families.
- **Child Care Safety Net** - A new system of subsidising child care costs for eligible families.
- **Additional Child Care Subsidy** - Extra support for eligible families.

How does it work?

The package will be implemented from 1st March 2015. This package will provide a range of new services and support for children and their families. The package includes:

- **Child Care Subsidy (CCS)** - A new system of subsidising child care costs for eligible families.
- **Annual Subsidy Cap** - A limit on the amount of CCS a family can receive each year.
- **Additional Child Care Subsidy** - Extra support for eligible families.
- **Child Care Safety Net** - A new system of subsidising child care costs for eligible families.
- **Additional Child Care Subsidy** - Extra support for eligible families.

Find out more

To find out more, visit our website at www.flexibuzz.com or call us on 1300 555 727.

Visit: <https://www.education.gov.au/contact-department>

Call: Department of Education and Training on 1300 555 727

After The Bell

Stay in touch with FlexiBuzz

- STEP 01** Sign up for FlexiBuzz and then login

Search "FlexiBuzz" in your app store. Go to web.flexibuzz.com and click "Sign Up".
- STEP 02** Connect to us

Select the 'Search' icon and type in our name. Select us from the results.
- STEP 03** Select your communication groups

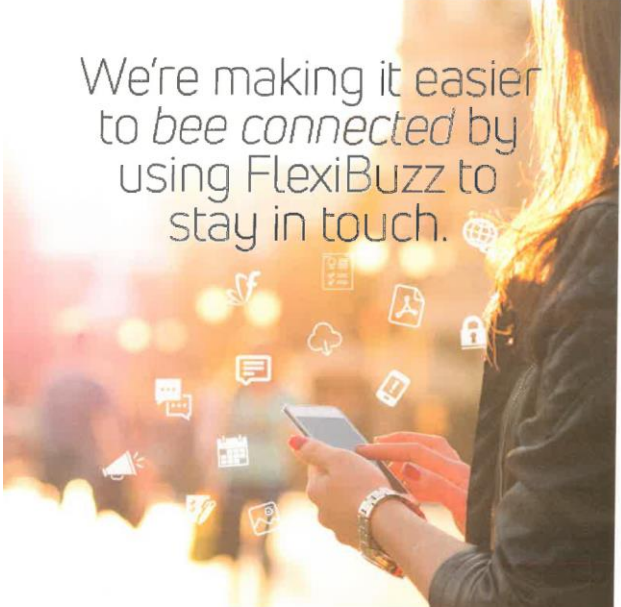
Click the 'Add' icon beside the communication groups that apply to you.
- STEP 04** Get started

Click the 'Home' icon to view our recent posts.

For further information or assistance please visit our website www.flexibuzz.com or email us via support@flexibuzz.com



We're making it easier to be connected by using FlexiBuzz to stay in touch.



Register for FlexiBuzz on your phone, tablet or PC to receive our news, messages, events and other communications.

FlexiBuzz

Lethbridge Primary School makes no representations or warranties of any kind, whether express or implied, regarding any of the classified ads in the newsletter